

TYPICAL TOWNHOUSE 3BHK PLAN

GROUND FLOOR



MahaRERA Reg. Nos. P52000021143, P52000021142, P52000021144 | Website: <http://maharera.mahaonline.gov.in>

Disclaimer: Plans, drawings, amenities, dimensions, elevations, illustrations, facilities, features, specifications, other information, etc. mentioned are indicative of the kind of development that is proposed and are subject to the approval from the competent authorities and shall be in compliance of RERA Act and Rules and Regulations. Township will be developed in Phases as per the registrations with RERA and other details which will be updated on RERA Website from time to time. Furniture, Fixtures and Furnishings shown are only for representation and shall not be provided in the actual bungalow. The Project is mortgaged to PNB Housing Finance Ltd.

TYPICAL TOWNHOUSE 3BHK PLAN

1ST FLOOR

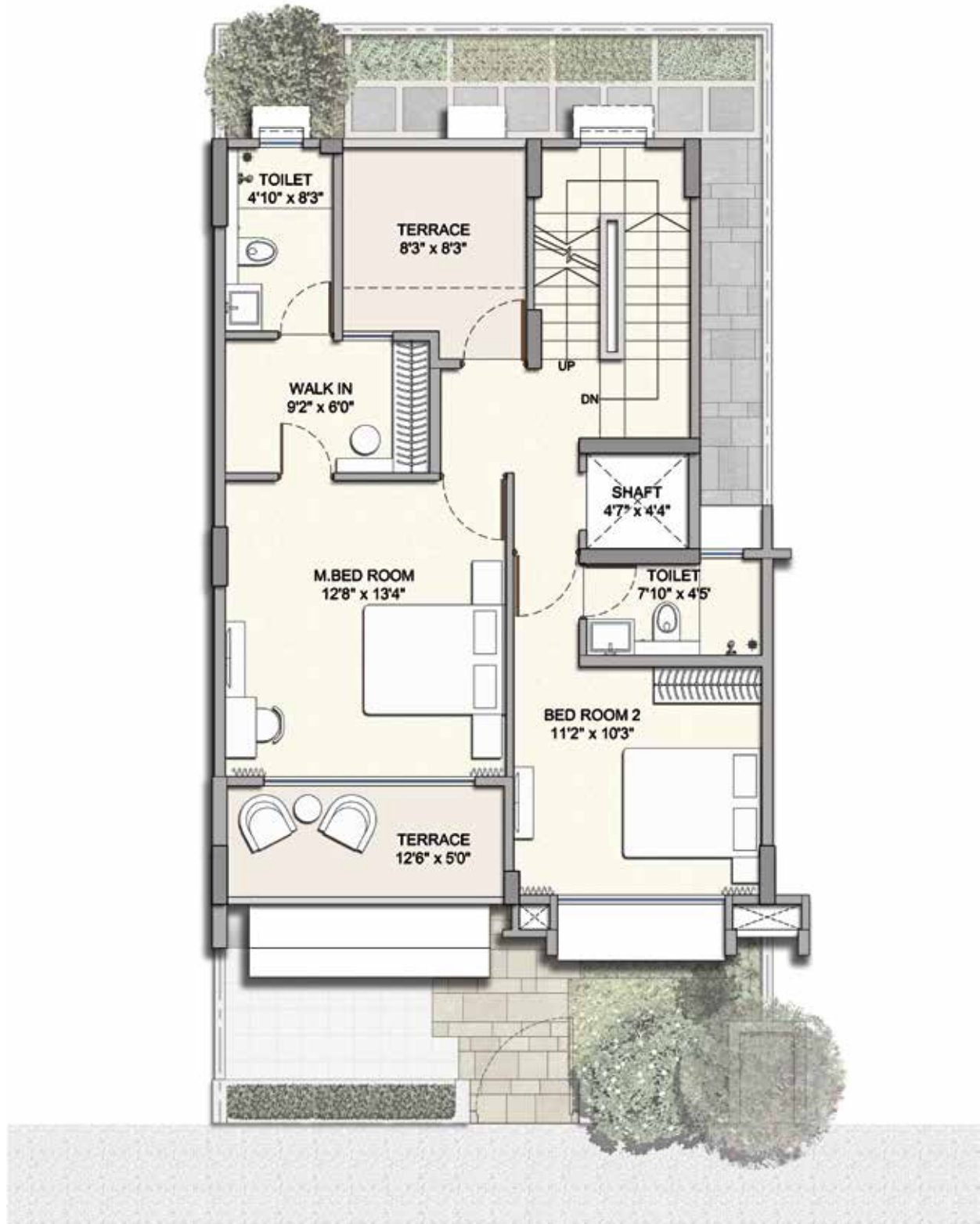


MahaRERA Reg. Nos. P52000021143, P52000021142, P52000021144 | Website: <http://maharera.mahaonline.gov.in>

Disclaimer: Plans, drawings, amenities, dimensions, elevations, illustrations, facilities, features, specifications, other information, etc. mentioned are indicative of the kind of development that is proposed and are subject to the approval from the competent authorities and shall be in compliance of RERA Act and Rules and Regulations. Township will be developed in Phases as per the registrations with RERA and other details which will be updated on RERA Website from time to time. Furniture, Fixtures and Furnishings shown are only for representation and shall not be provided in the actual bungalow. The Project is mortgaged to PNB Housing Finance Ltd.

TYPICAL TOWNHOUSE 3BHK PLAN

2ND FLOOR



MahaRERA Reg. Nos. P52000021143, P52000021142, P52000021144 | Website: <http://maharera.mahaonline.gov.in>

Disclaimer: Plans, drawings, amenities, dimensions, elevations, illustrations, facilities, features, specifications, other information, etc. mentioned are indicative of the kind of development that is proposed and are subject to the approval from the competent authorities and shall be in compliance of RERA Act and Rules and Regulations. Township will be developed in Phases as per the registrations with RERA and other details which will be updated on RERA Website from time to time. Furniture, Fixtures and Furnishings shown are only for representation and shall not be provided in the actual bungalow. The Project is mortgaged to PNB Housing Finance Ltd.

TYPICAL TOWNHOUSE 3BHK PLAN

TERRACE FLOOR



MahaRERA Reg. Nos. P52000021143, P52000021142, P52000021144 | Website: <http://maharera.mahaonline.gov.in>

Disclaimer: Plans, drawings, amenities, dimensions, elevations, illustrations, facilities, features, specifications, other information, etc. mentioned are indicative of the kind of development that is proposed and are subject to the approval from the competent authorities and shall be in compliance of RERA Act and Rules and Regulations. Township will be developed in Phases as per the registrations with RERA and other details which will be updated on RERA Website from time to time. Furniture, Fixtures and Furnishings shown are only for representation and shall not be provided in the actual bungalow. The Project is mortgaged to PNB Housing Finance Ltd.

TYPICAL TOWNHOUSE 4BHK PLAN

GROUND FLOOR

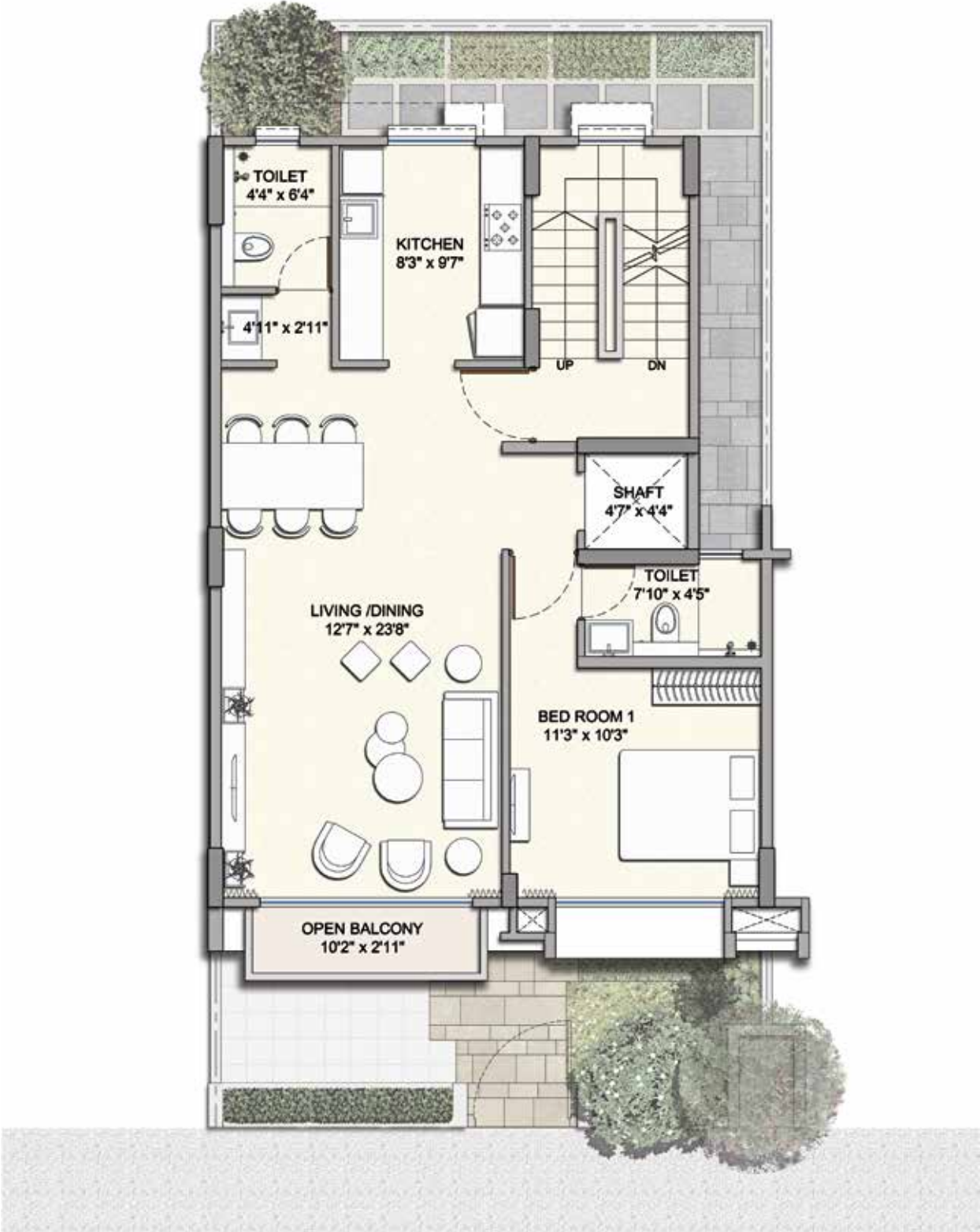


MahaRERA Reg. Nos. P52000021143, P52000021142, P52000021144 | Website: <http://maharera.mahaonline.gov.in>

Disclaimer: Plans, drawings, amenities, dimensions, elevations, illustrations, facilities, features, specifications, other information, etc. mentioned are indicative of the kind of development that is proposed and are subject to the approval from the competent authorities and shall be in compliance of RERA Act and Rules and Regulations. Township will be developed in Phases as per the registrations with RERA and other details which will be updated on RERA Website from time to time. Furniture, Fixtures and Furnishings shown are only for representation and shall not be provided in the actual bungalow. The Project is mortgaged to PNB Housing Finance Ltd.

TYPICAL TOWNHOUSE 4BHK PLAN

1ST FLOOR

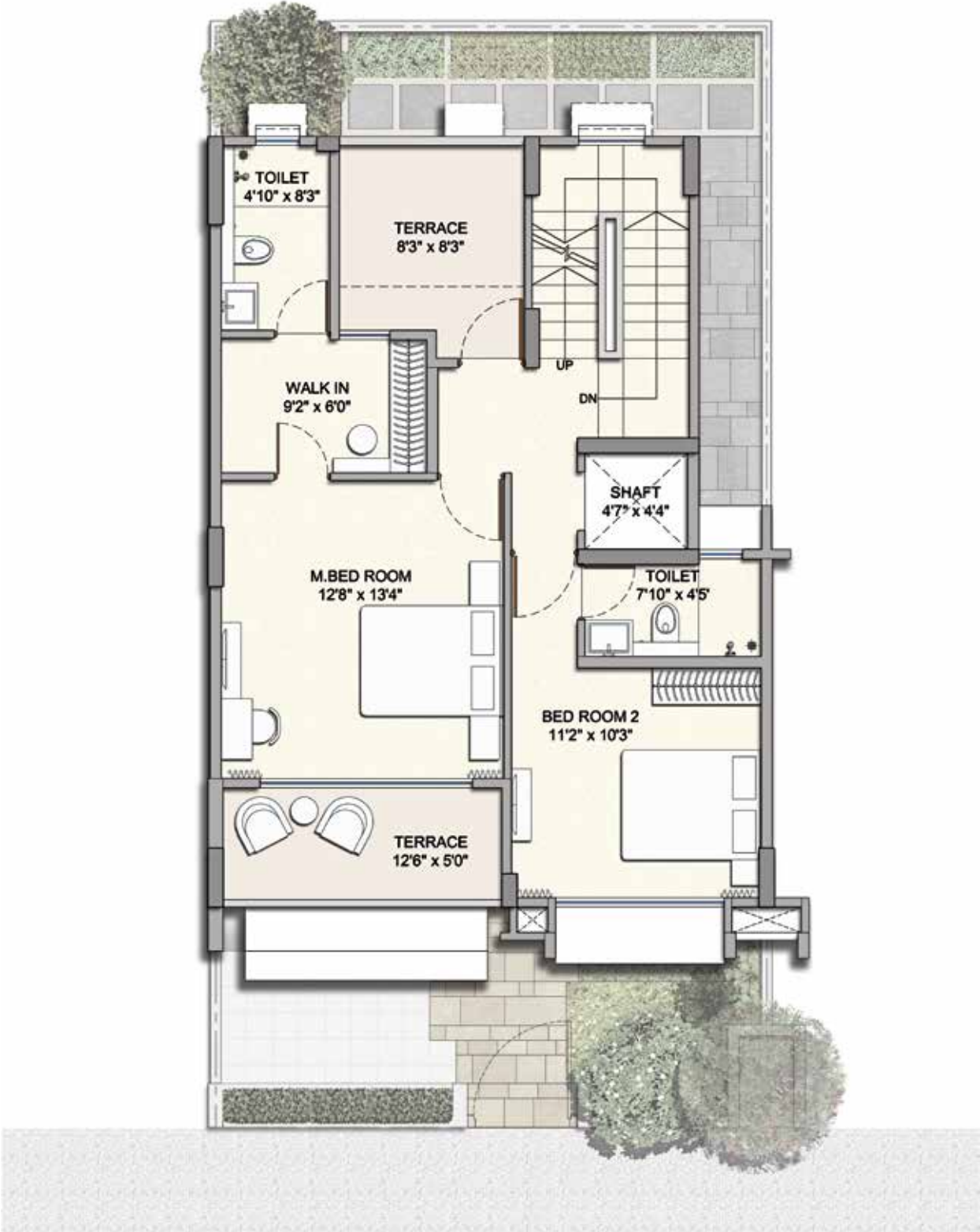


MahaRERA Reg. Nos. P52000021143, P52000021142, P52000021144 | Website: <http://maharera.mahaonline.gov.in>

Disclaimer: Plans, drawings, amenities, dimensions, elevations, illustrations, facilities, features, specifications, other information, etc. mentioned are indicative of the kind of development that is proposed and are subject to the approval from the competent authorities and shall be in compliance of RERA Act and Rules and Regulations. Township will be developed in Phases as per the registrations with RERA and other details which will be updated on RERA Website from time to time. Furniture, Fixtures and Furnishings shown are only for representation and shall not be provided in the actual bungalow. The Project is mortgaged to PNB Housing Finance Ltd.

TYPICAL TOWNHOUSE 4BHK PLAN

2ND FLOOR



MahaRERA Reg. Nos. P52000021143, P52000021142, P52000021144 | Website: <http://maharera.mahaonline.gov.in>

Disclaimer: Plans, drawings, amenities, dimensions, elevations, illustrations, facilities, features, specifications, other information, etc. mentioned are indicative of the kind of development that is proposed and are subject to the approval from the competent authorities and shall be in compliance of RERA Act and Rules and Regulations. Township will be developed in Phases as per the registrations with RERA and other details which will be updated on RERA Website from time to time. Furniture, Fixtures and Furnishings shown are only for representation and shall not be provided in the actual bungalow. The Project is mortgaged to PNB Housing Finance Ltd.

TYPICAL TOWNHOUSE 4BHK PLAN

TERRACE FLOOR



MahaRERA Reg. Nos. P52000021143, P52000021142, P52000021144 | Website: <http://maharera.mahaonline.gov.in>

Disclaimer: Plans, drawings, amenities, dimensions, elevations, illustrations, facilities, features, specifications, other information, etc. mentioned are indicative of the kind of development that is proposed and are subject to the approval from the competent authorities and shall be in compliance of RERA Act and Rules and Regulations. Township will be developed in Phases as per the registrations with RERA and other details which will be updated on RERA Website from time to time. Furniture, Fixtures and Furnishings shown are only for representation and shall not be provided in the actual bungalow. The Project is mortgaged to PNB Housing Finance Ltd.

TYPICAL BUNGALOW PLAN

GROUND FLOOR

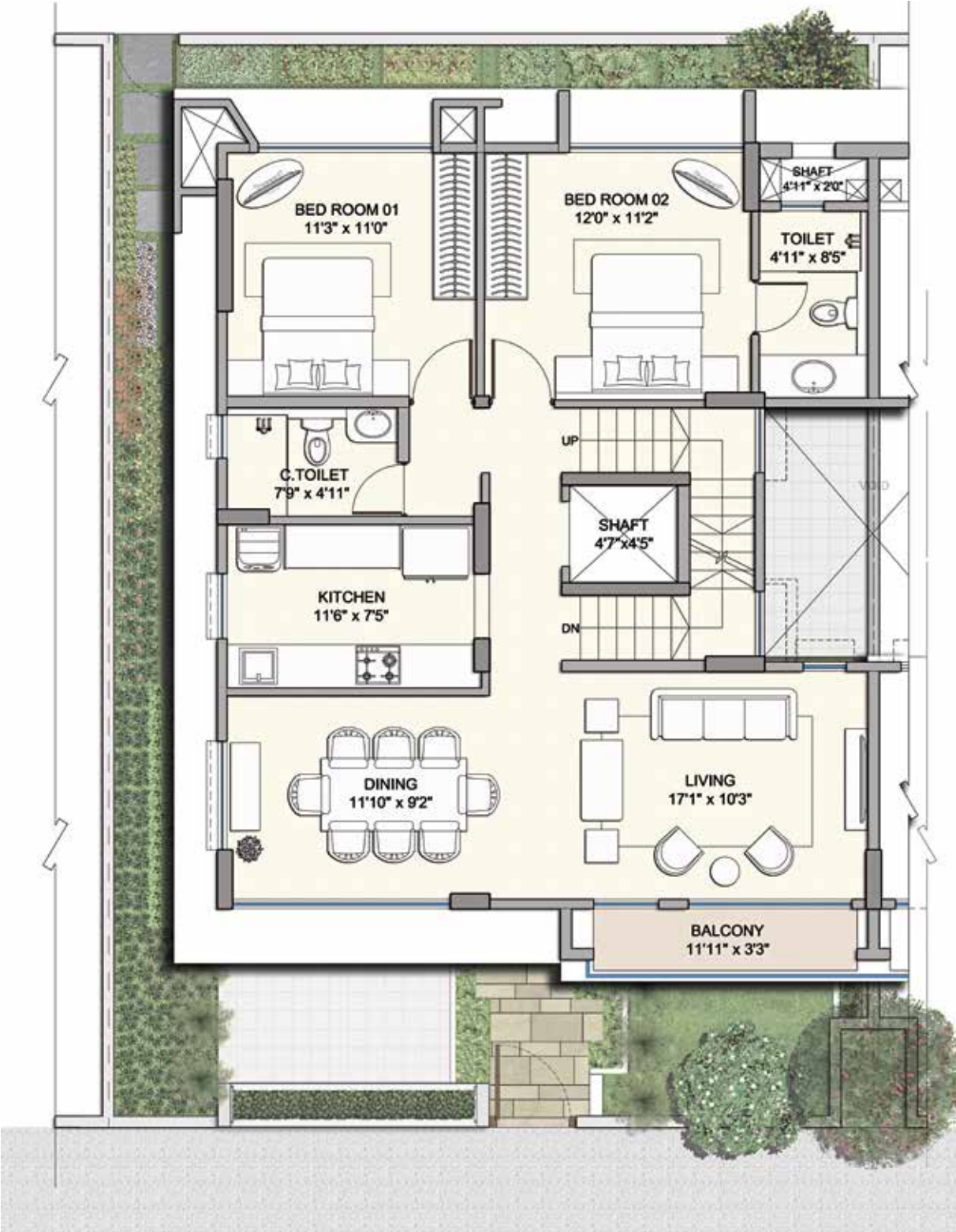


MahaRERA Reg. Nos. P52000021143, P52000021142, P52000021144 | Website: <http://maharera.mahaonline.gov.in>

Disclaimer: Plans, drawings, amenities, dimensions, elevations, illustrations, facilities, features, specifications, other information, etc. mentioned are indicative of the kind of development that is proposed and are subject to the approval from the competent authorities and shall be in compliance of RERA Act and Rules and Regulations. Township will be developed in Phases as per the registrations with RERA and other details which will be updated on RERA Website from time to time. Furniture, Fixtures and Furnishings shown are only for representation and shall not be provided in the actual bungalow. The Project is mortgaged to PNB Housing Finance Ltd.

TYPICAL BUNGALOW PLAN

1ST FLOOR

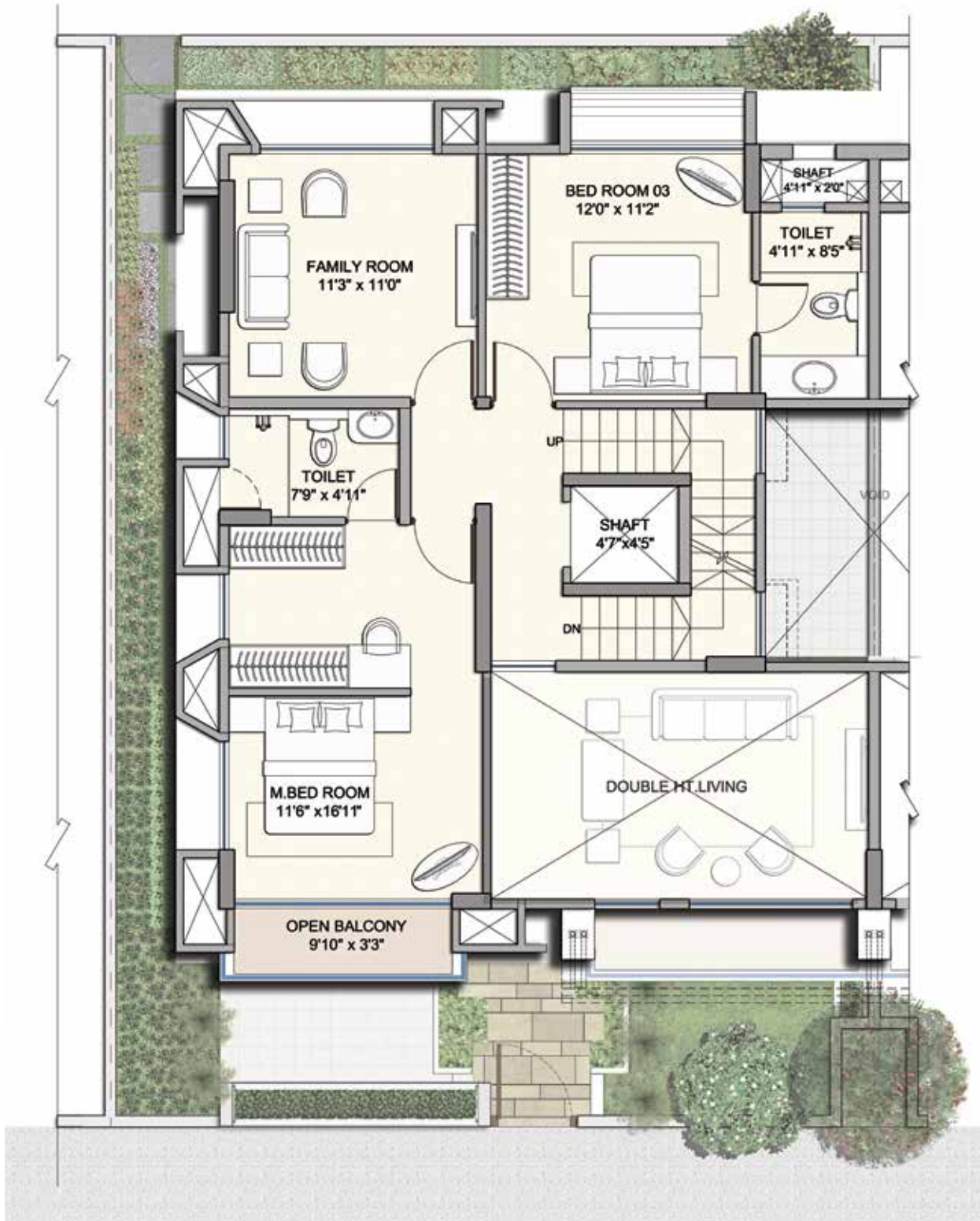


MahaRERA Reg. Nos. P52000021143, P52000021142, P52000021144 | Website: <http://maharera.mahaonline.gov.in>

Disclaimer: Plans, drawings, amenities, dimensions, elevations, illustrations, facilities, features, specifications, other information, etc. mentioned are indicative of the kind of development that is proposed and are subject to the approval from the competent authorities and shall be in compliance of RERA Act and Rules and Regulations. Township will be developed in Phases as per the registrations with RERA and other details which will be updated on RERA Website from time to time. Furniture, Fixtures and Furnishings shown are only for representation and shall not be provided in the actual bungalow. The Project is mortgaged to PNB Housing Finance Ltd.

TYPICAL BUNGALOW PLAN

2ND FLOOR



MahaRERA Reg. Nos. P52000021143, P52000021142, P52000021144 | Website: <http://maharera.mahaonline.gov.in>

Disclaimer: Plans, drawings, amenities, dimensions, elevations, illustrations, facilities, features, specifications, other information, etc. mentioned are indicative of the kind of development that is proposed and are subject to the approval from the competent authorities and shall be in compliance of RERA Act and Rules and Regulations. Township will be developed in Phases as per the registrations with RERA and other details which will be updated on RERA Website from time to time. Furniture, Fixtures and Furnishings shown are only for representation and shall not be provided in the actual bungalow. The Project is mortgaged to PNB Housing Finance Ltd.

TYPICAL BUNGALOW PLAN

TERRACE FLOOR PLAN



MahaRERA Reg. Nos. P52000021143, P52000021142, P52000021144 | Website: <http://maharera.mahaonline.gov.in>

Disclaimer: Plans, drawings, amenities, dimensions, elevations, illustrations, facilities, features, specifications, other information, etc. mentioned are indicative of the kind of development that is proposed and are subject to the approval from the competent authorities and shall be in compliance of RERA Act and Rules and Regulations. Township will be developed in Phases as per the registrations with RERA and other details which will be updated on RERA Website from time to time. Furniture, Fixtures and Furnishings shown are only for representation and shall not be provided in the actual bungalow. The Project is mortgaged to PNB Housing Finance Ltd.



LEGENDS

- ① ENTRY
- ② CHILDREN PLAY AREA
- ③ CLUB MAGNOLIA
- ④ POOL
- ⑤ PLAY LAWN
- ⑥ REFLEXOLOGY PATH
- ⑦ HALF BASKET BALL COURT
- ⑧ TENNIS COURT
- ⑨ OUTDOOR GYM
- ⑩ FLOWER GARDEN
- ⑪ WALKING / JOGGING TRACK
- ⑫ BULBS & TUBER GARDEN
- ⑬ INFANT PLAY AREA
- ⑭ YOGA LAWN
- ⑮ CHESS PLAZA
- ⑯ VISITOR'S PARKING

-  TWIN BUNGLOW
-  TOWN HOUSE



LAYOUT PLAN